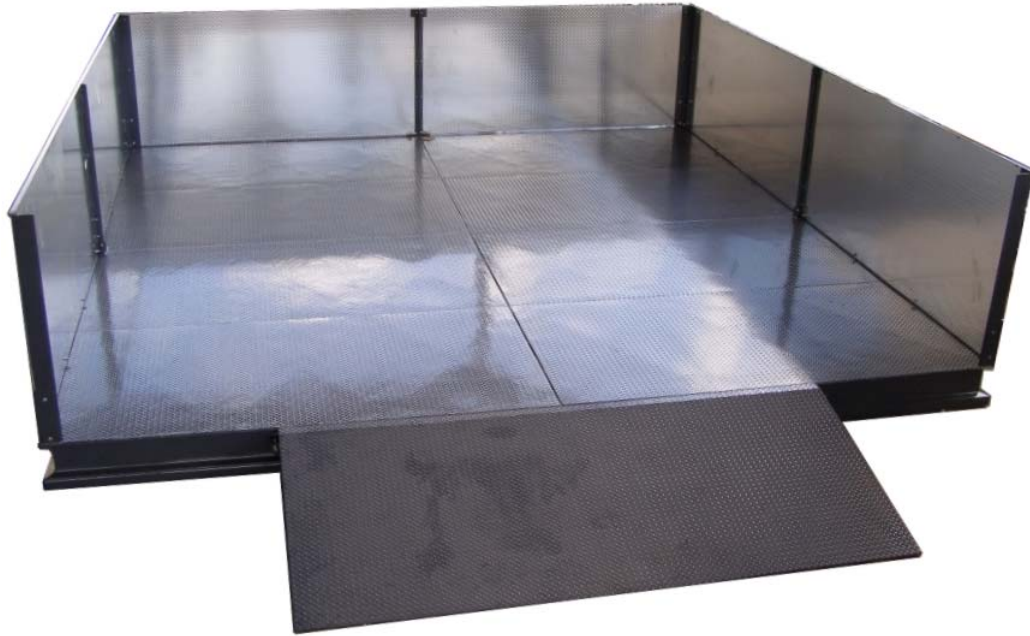


RGF[®] ENVIRONMENTAL GROUP

Portable Washpad System



RGF's Portable Washpad requires no permits and can be operational in hours not weeks. Constructed of steel and aluminum with a 2 part epoxy coating for years of service, it has a built in washwater catchment trough with sump pump which sends the water to your recycling system for reuse or to discharge (if permitted). Two standard sizes are available and able to support large equipment Up to 20,000 lbs. Built in ramp makes access simple. Custom sizes are available.



<i>Item #</i>	<i>Description</i>	<i>Dimensions</i>	<i>Ship Weight</i>
OP-118	Portable Washpad	56"H x 18'L x 18'W	8,500 Lbs.
OP-123	Portable Washpad	56"H x 18'L x 9'W	4,500 Lbs.

RGF Environmental Group, Inc.

1101 West 13th Street Riviera Beach, Florida 33404 800 842-7771 Fax 561 848-9454 www.rgf.com